

LIVE!

AUCTION

Farm Equipment

MONDAY, MARCH 28 | 11AM CST 2022

38475 276th St., Corsica, SD 57328.

From the intersection of Hwys 44 & 50, 11 miles east, or from Corsica, SD, 3 miles south and 4 miles west.



PREVIEW: By appointment Monday, March 21 – Friday, March 25. **LOADOUT:** By appointment Monday, March 28 – Friday, April 1. Contact Andy 605.884.6238, Bryan 605.881.7629, or Representative Rex Dummer 605.610.7989 for Preview and Loadout Appointments

MFWD TRACTORS

2011 John Deere 8335R MFWD, premium CommandView II cab, active seat, premium radio, powershift, ILS, 5 hyd., 60 gpm hyd. pump, power beyond, return flow, 3 pt., quick hitch, 1000 PTO, GS3 7" integrated display, AutoTrac ready, foot throttle, diff lock, HID lights, cold weather pkg., heated/power mirrors, joystick controls, dual fender 3 pt. controls, Cat 4 HD draw bar, front weights, front fenders, 380/80R38 front duals, 480/80R50 rear duals, shows 1,857 hrs., S/N1RW8335RJP044116

2008 John Deere 8430 MFWD, powershift, deluxe cab, active seat, 4 hyd., 60 gpm hyd. pump, power beyond, return flow, 3 pt., quick hitch, 1000 PTO, AutoTrac ready, diff lock, rear 3 pt. controls, front weights, front fenders, rear wheel weights, 1500 Series front axle, LSW 1000/40R32 front tires, LSW 1100/45R46 rear tires, shows 2,994 hrs., S/NRW8430P022939

2008 John Deere 7730 MFWD, IVT, deluxe cab, active seat, 3 hyd., 32 gpm hyd. pump, return flow, 3 pt., quick hitch, 540/1000 PTO, AutoTrac ready, LH reverser, foot throttle, diff lock, HID lights, cold weather pkg., power mirrors, rear 3 pt. controls, draw bar, front fenders, front weights, rear wheel weights, 380/85R34 front tires, VF480/80R46 rear duals, shows 2,777 hrs., owner states approx. 650 hrs. on remfg. motor, S/NRW7730D009792

4WD & 2WD TRACTORS

2009 John Deere 9530 4WD, deluxe cab, active seat, powershift, 4 hyd., 48 gpm hyd. pump, front & rear diff lock, AutoTrac ready, HID lights, beacon light, front & rear wheel weights, IF800/55R46 tires, shows 3,730 hrs., S/NRW9530P011210

1996 John Deere 5300 2WD, open station, ROPS w/canopy, 9/3 spd., 2 hyd., 3 pt., 540 PTO, joystick loader controls, John Deere 520 loader, 61" bucket, loader S/N: W00520X008309, rear fenders, rear wheel weights, 9.5L-15 front tires, 16.9-30 rear tires, shows 1,995 hrs., S/NLV5300E532659

1974 John Deere 4630 2WD, CAH, powershift, 3 hyd., power beyond w/loader control valve, 3 pt., quick hitch, 1000 PTO, diff lock, joystick loader controls w/3rd valve, Woods-Dual 355 loader, 102" bucket, loader S/N: 1694, rear wheel weights, 14L-16.1 front tires, 520/85R38 rear tires, shows 4,288 hrs., S/N011661R

COMBINE

2008 John Deere 9770 STS, Contour-Master, premium cab, HD variable spd. feeder house, AutoTrac ready, John Deere 5" Command Center, extra high cap. lift cyl., deluxe header controls w/AHH, reverser, rock trap, Maurer hopper ext., integrated chopper/chaff spreader w/PowerCast tailboard, Extender auger ext., single pt. hookup, round bar concaves, draper compatible, cold weather pkg., Voyager backup camera, Lankota folding ext. rear hitch, rear adj. axles, 520/80R42 straddle front duals, 18.4R26 rear tires, shows 1,492 sep. hrs., shows 2,161 engine hrs., S/NH09770S725608

HEADS & HEADER TRAILERS

2020 John Deere C8R Stalkmaster chopping corn head, 8x30", AHH, RowSense, hyd. deck plates, knife rolls, poly ear savers, stalk stompers, stubble lights, single pt. hookup, S/N1H00C8RXJM0815566

2019 John Deere 735FD flex draper head, 35', hyd. fore/aft, flip-over finger reel, AHH, double knife drive, poly bottom, stubble lights, single pt. hookup, owner states approx. 1,500 acres, S/N1H0735FDEK0805701

2013 Maurer M38 tandem axle header trailer, 38', dolly front, ext. pin hitch, torsion susp., dual axle electric brakes, ST225/75R15 tires, S/N133842M4405079138602

2004 Maurer single axle header trailer, 30', dolly front, ext. pin hitch, torsion susp., 9.5L-15 tires, S/N04301000007003080

PLANTER

2015 John Deere 1795 CCS inter-plant planter, 16/31, 15" inter-plant spacing, Exact Emerge row unit, electric drive w/power, hyd. drive alternate for meter batteries, pneumatic down pressure, Yetter pneumatic trash cleaners, 4" gauge wheels, scrapers, (1) rubber closing wheel, (1) Dawn cast iron closing wheel, tri-fold hyd. markers, on-board air compressor, 420 gal. liquid fertilizer tank, (31) rows liquid fertilizer, Dosatron fungicide liquid boxes, vari-rate on liquid fertilizer, 2" fill, Hi-Pro hyd. driven pump, John Blue ManiFold w/blockage monitor, Bluetooth capable, MTG antenna, frame controls, 11-22.5 tires on main frame, 10.00-15 tires on wings, owner states approx. 6,300 acres, S/N1A01795GPFA760594

GPS & NAVIGATION EQUIPMENT

2020 John Deere SF6000 receiver, SF1, SF3 ready, RTK ready, S/NPCS161B320450

2018 John Deere SF6000 receiver, SF1, SF3 ready, RTK ready, S/NPCS161B994080

2018 John Deere SF6000 receiver, SF1, SF3 ready, RTK ready, S/NPCS161B983805

2014 John Deere 2630 display, SF2, S/NPCGU2UD466861

2012 John Deere 2630 display, SF2, Section Control, S/NPCGU2UA392221

2011 John Deere 2630 display, SF2, RowSense, Itec Pro, S/NPCGU2UA326482

2009 John Deere 2600 display, SF2, Swath Control Pro, S/NPCGU26H194859

John Deere 2600 display, SF1, S/NPCRM26E143751

John Deere 2600 display, SF1, S/NPCRM26E143751

TILLAGE EQUIPMENT

2014 John Deere 2623VT vertical tillage, 33' 7", 7-1/2" spacing, 3-section fold, 21-1/2" front discs, 12-wave 21-1/2" coulters, scrapers, single pt. depth, 14" rolling baskets, hyd. adj. baskets, 7.60-15 wing gauge wheels, walking tandems across, 12.5L-15 tires, S/N1N02623VLD0755404

2009 John Deere 637 disc, 31' 10", 9" front & 11" rear spacing, 3-section fold, Blackland rock flex, 22-1/4" front discs, 23" rear discs, scrapers, 3-bar coil tine harrow, wing gauge wheels, walking tandems across, 12.5L-16 tires, welding on hitch, S/NN00637X014944

FERTILIZER APPLICATOR

Blu-Jet AT4010 liquid fertilizer applicator, 16x30", 1,200 gal. poly tank, 3" fill, John Blue hyd. driven pump, Red Ball ManiFold, 5-section hyd. fold, GreenStar vari-rate control, SS Y-drops, hyd. boom adj., 320/90R46 tires, sells w/coulters, S/N011431

LAND ROLLER

2006 Summers Super Roller land roller, 45', hyd. front-fold drums, 42" drums, hyd. lift, light pkg., tandems, 12.5L-15 tires, welding on hitch, S/NF0664

SEMI-TRACTORS

2006 Sterling AT9500 tandem axle day cab, Series 60 Detroit, 14.0L, 515 hp., Eaton Fuller SmartShift, air ride, air slide 5th, engine brake, dual fuel tanks, full poly fenders, 165" WB, 11R22.5 tires on aluminum front/steel rear rims, shows 1,868 hrs., shows 559,751 miles, recent injector work

2006 Sterling AT9500 tandem axle day cab, Series 60 Detroit, 14.0L, 515 hp., Eaton Fuller SmartShift, air ride, air slide 5th, engine brake, dual fuel tanks, 1/4 poly fenders, 165" WB, 11R22.5 tires on aluminum front/steel rear rims, shows 990 hrs., shows 500,425 miles

PICKUP

1999 Chevrolet K3500 dually LS, crew cab, 7.4L V8 gas, automatic, 4WD, 6-1/2" box, cloth, power windows/locks/mirrors, AM/FM radio, CD player, spring ride, 5th wheel ball, LT225/15R16 tires, shows 115,239 miles

TRAILERS

2021 Tipte Super Hopper tandem axle hopper bottom trailer, 42'x96"x60", ag hoppers, air ride, EZ Flow hyd. traps, Thunderstone Thunder 7000 electric roll tarp, hurricane straps, front roll tarp controls, front & rear ladders, air gauge w/dump valve, 11R24.5 tires on aluminum outside/steel inside rims

2008 Tipte Super Hopper tandem axle hopper bottom trailer, 42'x96"x60", ag hoppers, spring ride, EZ Flow hyd. traps, Shur-Co 4500 electric roll tarp, front roll tarp controls, front & rear ladders/catwalks, 11R24.5 tires on steel rims

2005 Wilson Pacesetter tri-axle hopper bottom trailer, 46'x96"x72", std. hoppers, spring ride, air lift 3rd, 2 spd. traps, Shur-Co 3500 electric roll tarp, front roll tarp controls, front & rear ladders/catwalks, 11R24.5 tires on all steel rims/(1) aluminum rim

2016 Forest River tandem axle bumper hitch enclosed V-nose trailer, 16'x7', 2" V-nose, curbside door, rear pull-down door, roof vent, wood floor, in-floor tie downs, 2-5/16" ball, spare tire, 7,000 lb. axles, 205/75D15 tires

2011 PJ Deck Over tandem axle bumper hitch deck over flatbed trailer, 17'x96", 3' beavertail, wood deck, fold-up ramps, 7,000 lb. axles, 2-5/16" ball, electric brakes, spring ride, spare tire, ST235/80R16 tires

Tandem axle bumper hitch flatbed trailer, 16'x78", 2' beavertail, wood deck, ramps w/slide-in compartment, 2-5/16" ball, spring ride, spare tire, ST225/75R16 tires

2004 Stehl single axle bumper hitch car dolly trailer, straps, 2" ball, ST185/8R13 tires, No title

GRAIN CART & GRAIN HANDLING EQUIPMENT

2008 Demco 1050 grain cart, 1,050 bu., 18" corner auger, 1000 PTO, Shur-Co roll tarp, clean-out door, Avery Weigh Tronix 640M scale, hyd. fold auger, hyd. spout adj., front sight glass, 900/60R32 tires, S/NY00193

2014 Brandt grain deck, drive over, 18" conveyor, hyd. drive, hyd. lift, ST205/75R15 tires, S/N11103514

2010 Westfield MK130-81 Plus low pro swing hopper auger, 81"x13", 540 PTO, hyd. lift, cable lift hopper, ST235/80R16 tires, S/N223643

(2) Grain cleaners

OTHER EQUIPMENT

2017 Agri Drain Maxi Stringer single axle tile trailer, 8' table, self-contained 12v hyd. pump, remote, flip-up ext., spring ride, 205/75R15 tires

NRM SB108D-COC snowblower, 108", 2 stage, double auger, 3 pt., 1000 PTO, hyd. rotate chute, manual spout adj., S/NSEL2110513

Bale spear extension, 6'x30"

(9) New Holland suitcase weights, 45 kg.

POLY TANK

1,500 gal. cone poly tank, 2" plumbing, 76"x76" steel stand

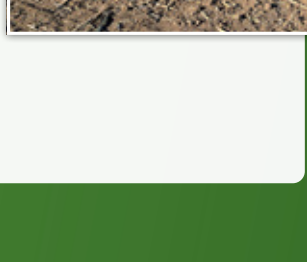
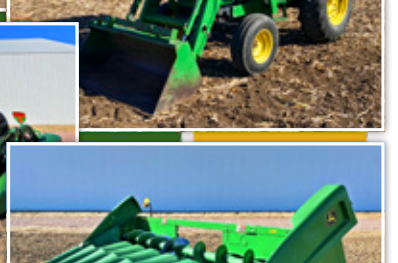
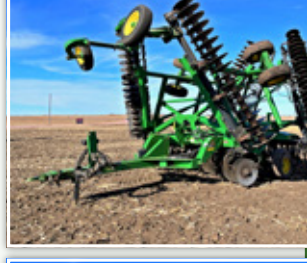
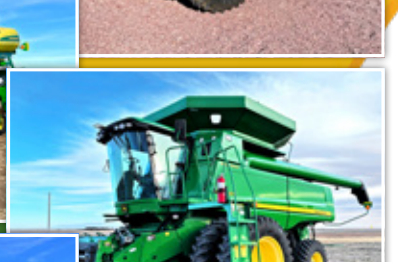
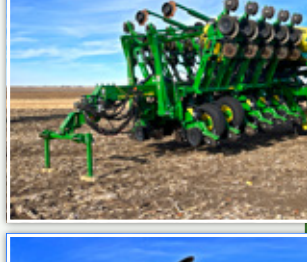
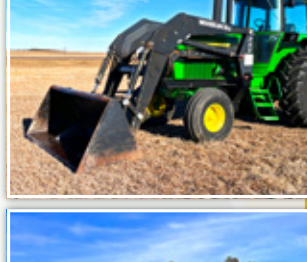
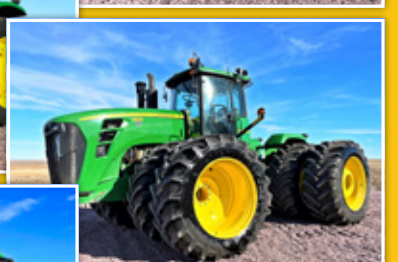
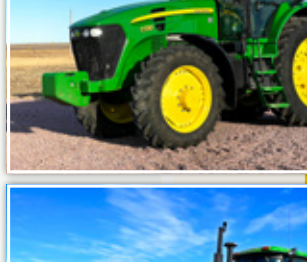
FUEL TANKS

1,000 gal. fuel tank, skid mounted, Gasboy electric fuel pump, 110v

(2) 500 gal. fuel tanks, skid mounted, Fill-Rite FR pump, 700v, 20 gpm, 115 vac pump, fuel gauge

Better Built 100 gal. transfer tank, Fill-Rite 12v pump, 15 gpm, S/NAN003785

ASSORTMENT OF FARM SUPPORT AND MISCELLANEOUS ITEMS



JERRY L. HOOGERS LIVING TRUST
James Hoogers, Trustee 763.244.0721

Or Rex Dummer at Steffes Group, 605.610.7989 or 605.789.5677

605.789.5677 | SteffesGroup.com

Steffes Group, Inc., 1688 Hwy 9, Larchwood, IA 51241



TERMS: All items sold as is where is. Payment of cash or check must be made sale day before removal of items. Statements made auction day take precedence over all advertising. \$35 documentation fee applies to all titled vehicles. Titles will be mailed. Canadian buyers need a bank letter of credit to facilitate border transfer. Scott Steffes ND61, MN14-51; Brad Olstad ND319, MN14-70; Max Steffes ND999, MN14-031; Justin Ruth ND2019, MN14-041

